

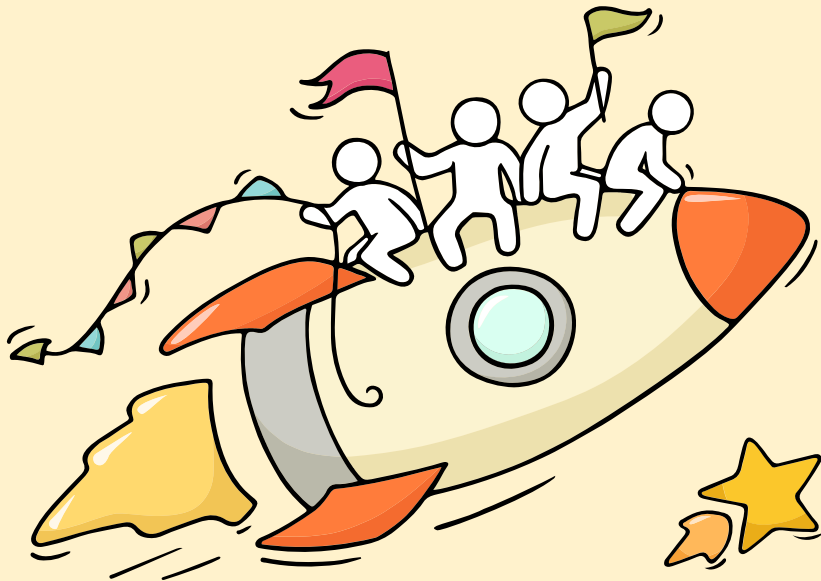
# Welcome Back!

Briefing Slides for Release of 2025 N-Level Results



# Dear students,

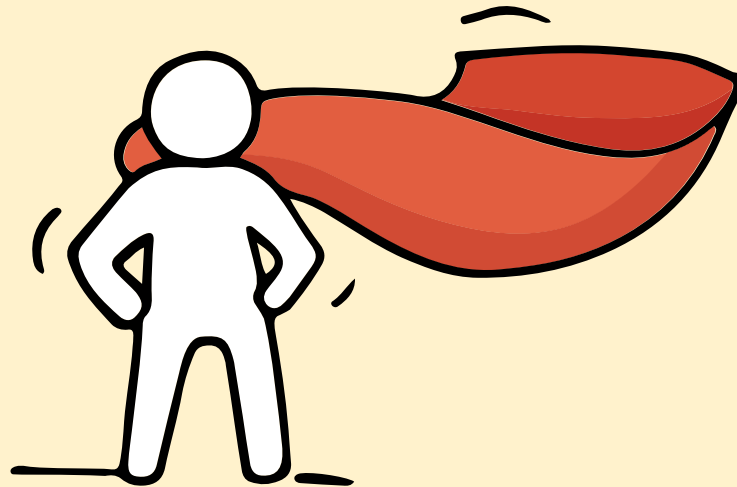
You have worked hard to reach this stage. Let's celebrate your efforts!



*Finally, we are going  
to get our results!*



Remember that while **everyone's**  
**educational journey is different,**  
**we can each have a fulfilling outcome!**



# Resources to support you as you receive your results

Receiving your results and making decisions about your post-secondary pathways can be exciting to some, but stressful to others.

Scan this QR code for an infographic with some helpful resources to support you.



<https://go.gov.sg/2025nlevelstudentresource>



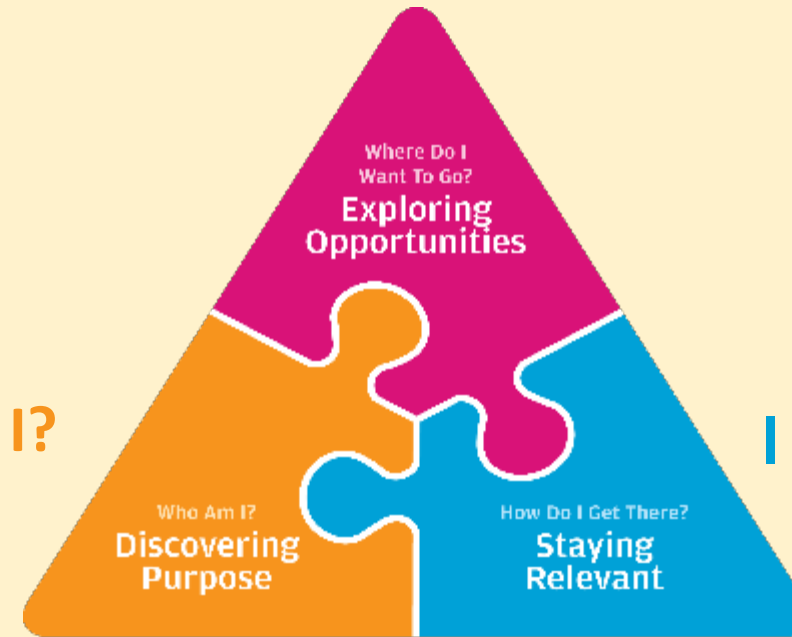
# Thinking about Your Next Step?

Consider these questions...

Where do I want to go?

Who am I?

How Do I Get There?



In the infographic, you can find resources which can help you make informed decisions.

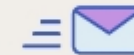
## PLANNING YOUR NEXT STEP

These resources will help you chart your path ahead:



• What's Next Brochure

<https://go.gov.sg/whats-next-nlevel>



• Contact the ECG Centre @ MOE

<https://go.gov.sg/moe-ecg-centre>



• MySkillsFuture Student Portal

<https://go.gov.sg/MySFSec>



• Chat with your school's ECG Counsellor

# Resources to help you make informed decisions



## PLANNING YOUR NEXT STEP

These resources will help you chart your path ahead:



• What's Next Brochure  
<https://go.gov.sg/whats-next-nlevel>



• Contact the ECG Centre @ MOE  
<https://go.gov.sg/moe-ecg-centre>



• MySkillsFuture Student Portal  
<https://go.gov.sg/MySFSec>



• Chat with your school's  
ECG Counsellor



## MySkillsFuture Student Portal

Use the information and tools to explore various education and career pathways and take charge of your future.

# Resources to help you make informed decisions

You can find the details of the various admissions exercises in the **Post-Secondary Admissions Exercises booklet** that can be downloaded from:

<https://www.moe.gov.sg/post-secondary/admissions>

- Direct-Entry-Scheme to Polytechnic Programme (DPP)
- Polytechnic Foundation Programme (PFP)
- Joint Intake Exercise (JIE) 'N' / 'E'
- NAFA Foundation Programme (NFP)





# Resources to help you make informed decisions

## Post-Secondary Education

Learn more about the  
post-secondary education institutions



<https://moe.gov.sg/post-secondary/overview>



# Concerned about your next steps?

Stop

- Calm yourself down. Take a few deep breaths.

Think

- Think through the different options that are available for you.
- Remember that the N-Level examination is not the end point and is only one part of your life journey.

Do

- Have conversations with trusted adults who know you well to advise and guide you (parents, teachers, ECG Counsellor).
- Decide and act based on your options.

**When you receive your results, you may experience a range of emotions.**

**Managing these emotions well will allow you to stay calm and make rational decisions.**

# Reaching out for support is a sign of strength

If you have questions about your options or are not coping well, you can reach out to trusted adults such as a parent/guardian, teacher, School Counsellor or ECG Counsellor. You can also talk to a trusted friend.

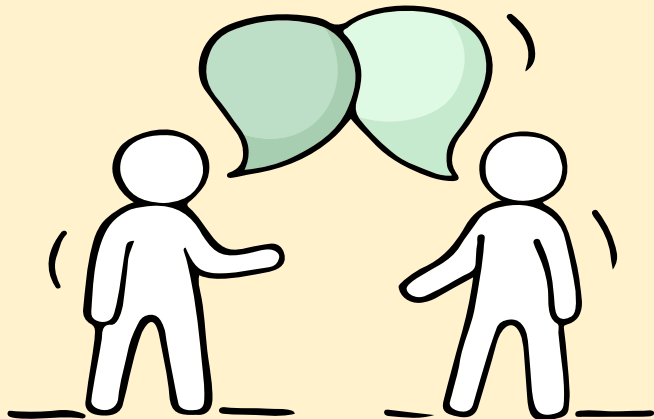
*Who can we  
go to for ECG  
advice?*

Make an appointment to speak with  
our ECG Counsellor Mr Peter in school

**OR**

Make an ECG counselling appointment  
via the  
ECG Centre @ MOE

<https://go.gov.sg/moe-ecg-centre>

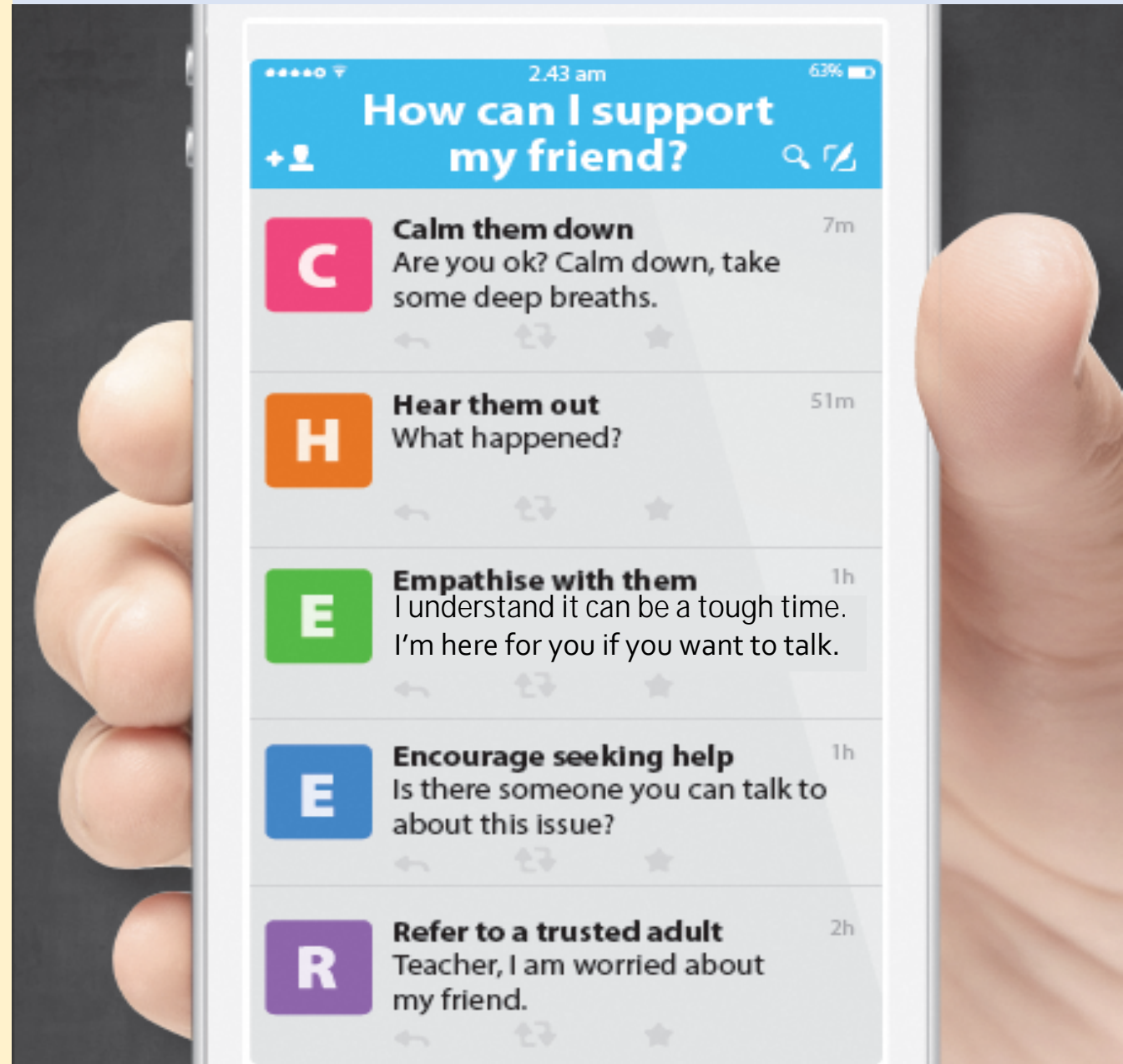


# Supporting Your Friend

- We may each experience different emotions upon receiving the results.
- You can share your friends' joy by congratulating them.
- If your friends appear to be disappointed with their results, encourage them.
- Alert a teacher if you are worried for them.



Keep a lookout for your friends in distress. You can support them in the following ways:



# Support is readily available for you.

There are other hotlines and chats available if you are more comfortable seeking help using these platforms.

**SOS** provides round-the-clock emotional support for those in distress, thinking of suicide or affected by suicide.

Call: **1767**  
(24-hour helpline)

WhatsApp: **9151 1767**  
(24-hour Care Text)

**Carey** is an online platform by Care Corner that provides free mental health check-ins with mental health professionals. Find out more at: <https://carey.carecorner.org.sg/>

**Community Health Assessment Team (CHAT)** provides personalised and confidential mental health checks and consultation for youths. To speak with a youth support worker, you can:

Visit: **CHAT Hub at \*Scape, 2 Orchard Link, #04-01A**  
Call: **6493 6500 / 6501**  
Email: [chat@mentalhealth.sg](mailto:chat@mentalhealth.sg)

**eC2** is an e-Counselling Centre where you can talk to a trained counsellor about the issues you are facing, right where you are.

Chat with a counsellor at: [www.ec2.sg](http://www.ec2.sg)  
Monday – Friday (Excluding Public Holidays): 10am – 12pm & 2pm – 5pm

**Mindline** is Singapore's national mental health helpline and textline service. The service is manned by trained counsellors who are ready to listen and support you.

Call: **1771**  
(24-hour helpline)  
WhatsApp: **6669 1771**  
(24-Hour messaging service via WhatsApp)

**TOUCHline** is a helpline to provide youths with emotional support and practical advice.

Call: **1800 377 2252**  
Monday- Friday (Excluding Public Holidays): 9am – 6pm





**The N-Level examination is  
one milestone in your  
education journey, and  
there are many more  
exciting pathways ahead.**

**Your future holds many  
opportunities waiting to be  
discovered!**

# Admissions Exercises

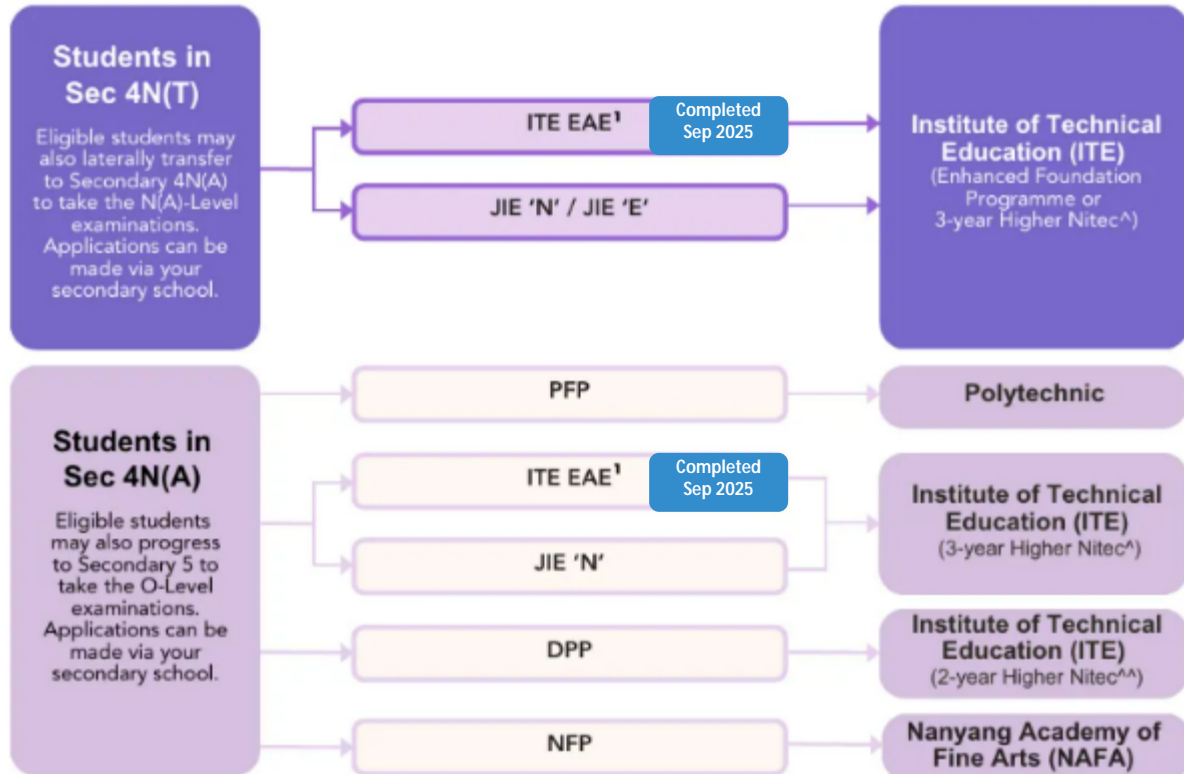
Things to note





## Post-Secondary Admissions Exercises for Students in Sec 4 Normal (Technical) and Normal (Academic)

### Admissions exercises to take part in



Source: [Post-Secondary Admissions Exercises booklet](#)

<sup>1</sup>Students apply through these admissions exercises before their examinations.

<sup>^</sup>For the list of 3-year Higher Nitec courses, please visit <https://www.ite.edu.sg/secondary-school-students/ite-full-time-courses/3-year-4-year-higher-nitec>



<sup>^^</sup>For the list of 2-year Higher Nitec courses under the DPP, please visit <https://www.ite.edu.sg/secondary-school-students/ite-full-time-courses/higher-nitec-for-dpp>





# Details of Admissions Exercises

## PFP – Polytechnic Foundation Programme

PFP is a one-year programme that offers a practice-oriented curriculum taught by polytechnic lecturers to better prepare polytechnic-bound Secondary 4N(A) students for entry into a polytechnic diploma.

Starting from the AY2026 PFP intake, students will be admitted into a PFP cluster, and progress to one of the diplomas within the cluster after completing the one-year programme.

The exceptions are Diploma in Nursing, Diploma in Early Childhood Development & Education, and Diploma in Tamil Studies with Early Education, for which students can be admitted either via the diploma-specific PFP or the relevant PFP cluster.

**PFP:** [go.gov.sg/pfp](https://go.gov.sg/pfp)

## DPP – Direct-Entry-Scheme to Polytechnic Programme

DPP allows Secondary 4N(A) students to be admitted directly into selected 2-year Higher Nitec courses at ITE without having to sit for the O-Level examinations. DPP students who successfully complete their Higher Nitec courses at ITE and attain the required qualifying Grade Point Average (GPA) scores are guaranteed a place in a polytechnic diploma course mapped to their Higher Nitec course.

**DPP:** [go.gov.sg/applydpp](https://go.gov.sg/applydpp)

## NFP – NAFA Foundation Programme

The NFP is a one-year practice-based programme that prepares Secondary 4N(A) students to pursue a diploma in the creative arts. NFP students who successfully complete the programme will be offered a place in their chosen diploma course at NAFA.

**NFP:** [go.gov.sg/applynafafp](https://go.gov.sg/applynafafp)

# Details of Admissions Exercises

## JIE 'N'/JIE 'E' – Joint Intake Exercise

The JIE 'N' is for students to apply for the 3-year Higher Nitec courses offered by ITE.








The JIE 'E' is for eligible<sup>1</sup> GCE N(T) students to apply for the 4-year Higher Nitec course under the Enhanced Foundation Programme.

**JIE 'N'/JIE 'E': [go.gov.sg/applyjien](https://go.gov.sg/applyjien)**

### NOTES

<sup>1</sup>Singaporean/ Singapore Permanent Resident Normal (Technical) holders with 'O' or '1' GCE 'N' Level pass.

# Application Period

Application Period	Dec 2025	Jan 2026
Admissions Exercises	JIE 'N', JIE 'H'   JIE 'E'  DPP (1 <sup>st</sup> window of applications)  NFP 	PFP  DPP (2 <sup>nd</sup> window of applications) 



For Students in Sec 4N(T)



For Students in Sec 4N(A)



# Full-time Intake Exercises

[Note: Application opens on Thu 18 Dec 2025 (2.30pm)]

List of ITE Full-time Intake Exercises

## Full-Time 3-year Higher Nitec courses (Jan 2026 Intake)

[For GCE 'N' and GCE 'O' level students \(JIE 'N'\) ↗](#)

[For ISC Progression to 3-year Higher Nitec \(ISCJ\) ↗](#)

## Full-Time 2-year Higher Nitec courses (Jan 2026 Intake)

[For GCE 'N' level students \[Direct Entry Scheme to Polytechnic Programme \(DPP\)\(JIE 'H'\)\]](#) ↗

## Full-Time 4-year Higher Nitec courses (Jan 2026 Intake)

[For GCE 'N' level students \(JIE 'E'\) ↗](#)

## Take note

All Secondary 4N(A) students with EMB3 of 19 and below who do not have a confirmed place in the DPP or *3 year Higher Nitec* programme, but are eligible for progression to Secondary 5, **MUST report to their secondary schools on 2 January 2026 (Fri) to continue with Secondary 5.**

## 3 pm Post Sec Briefing at learning Lab

- All students whose EMB3 is between 13 and 19 points are to proceed to learning lab after you receive your results for a short brief by Mr Ng on post secondary progression matters.
- Attendance is compulsory
- For students whose EMB3 is 12 points and below, you do not have to attend.

# Collection of SGC

- The collection of SGC will be sometime in March or April 2026
- Please check the school website for information regarding collection of your SGC next year
- You may also check with your character coach nearer to March of April 2026
- You are to collect your SGC within one month of the start of collection





Ministry of Education  
SINGAPORE