

The Personalised Digital Learning Programme (PDLP)



Briefing for Parents

A PRESENTATION BY
MINISTRY OF EDUCATION, SINGAPORE

OFFICIAL(OPEN)\NON-SENSITIVE



The National Digital Literacy Programme (NDLP) and the PDLP

An Overview

The National Digital Literacy Programme (NDLP)

1. The NDLP was launched in March 2020 to help students **strengthen their digital literacy and acquire digital skills** needed to navigate an increasingly digitalised world.
2. Under the NDLP, every secondary school student will **own a school-prescribed Personal Learning Device (PLD)**. Students may use funds from their Edusave Account to pay for the PLD.

Intended Outcomes of the PDLP

The use of the PLD for teaching and learning aims to:



**Support the Development of
Digital Literacy**



**Support Self-Directed and
Collaborative Learning**



**Enhance Teaching and
Learning**

Students' Experiences



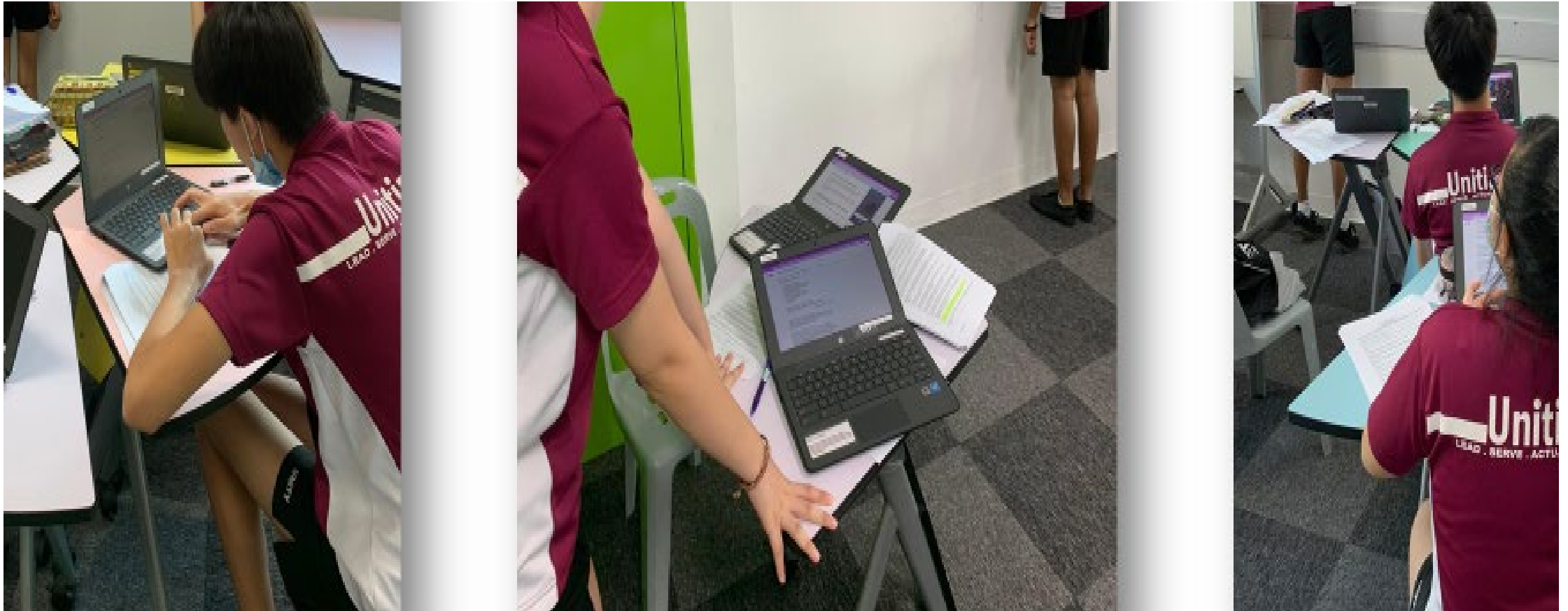
Learning with a PLD

Unity Secondary School

Note: The information contained in this deck of slides is customised according to our school's context and the device selected.

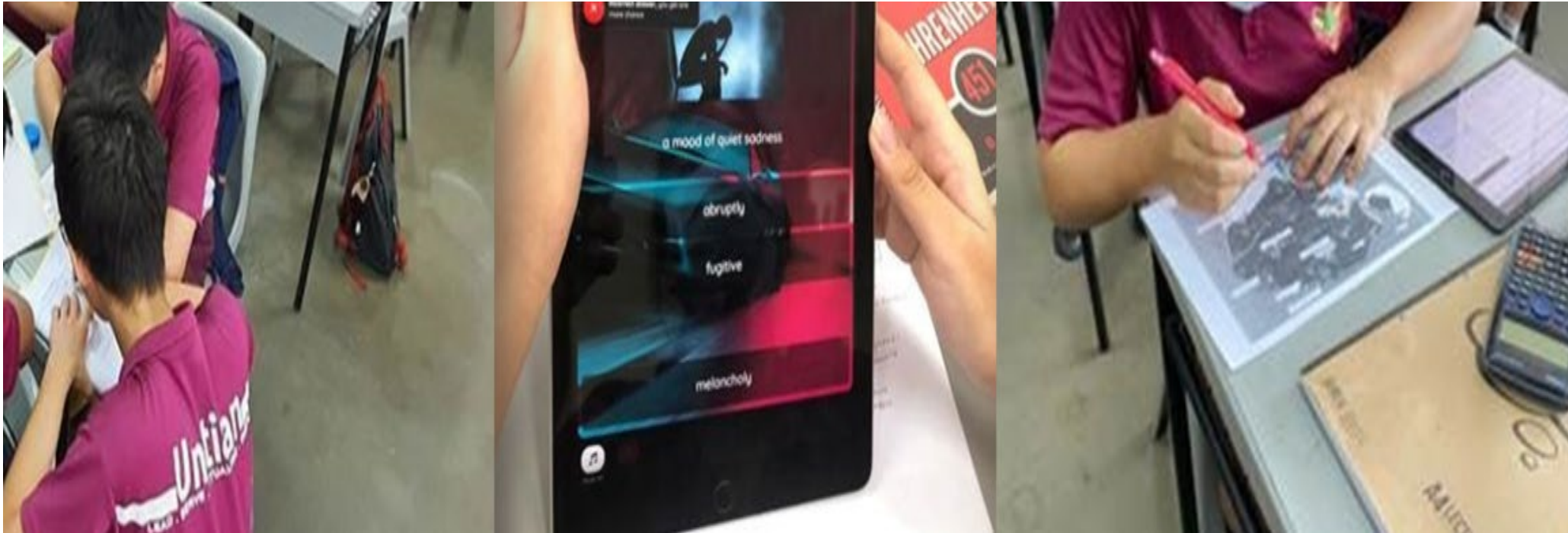
How will your child/ward use the PLD?

At Unity Secondary School, your child/ward will be using the PLD to experience **Active Learning** with **technology**.



How will your child/ward use the PLD?

Active Learning with **technology** means your child/ward will use technology to make their thinking visible through '**Doing**' such as drawing, writing, talking.



A photograph showing several students in a classroom. They are seated at desks, and many are looking at their mobile phones. The students are wearing white shirts and dark trousers or skirts. The classroom has large windows in the background showing greenery outside.

Frilled-necked lizard - For identifying and describing what "I see", "I hear", "I feel" or what "I imagine" might be there, including positive/negative, fair/unfair, safe/unsafe, easy/difficult, strengths/threats, etc.

TASK: Describe how the frilled-necked lizard has adapted to its habitat.

THREATS

- Holding still for long periods of time, waiting for prey (barnhopper predator)
- Out in the open when basking

LOOKS LIKE

- A spiny armor that it gets up on its hind foot to lean quickly - bipedal motion
- About 75 cm in length - light enough to scare off a lot of predators
- Different colors in different environments - camouflage

STRUCTURE

THREATS

- Cold - needs to bask to maintain good body temperature
- Unwilling to attack when basking for 40 minutes
- Angry or afraid when it puffs up its tail to scare enemies

FEELS LIKE


- Fights during mating season
- A very loud rattle after a binge during the wet season

SOUNDS LIKE

THREATS

STRENGTHS

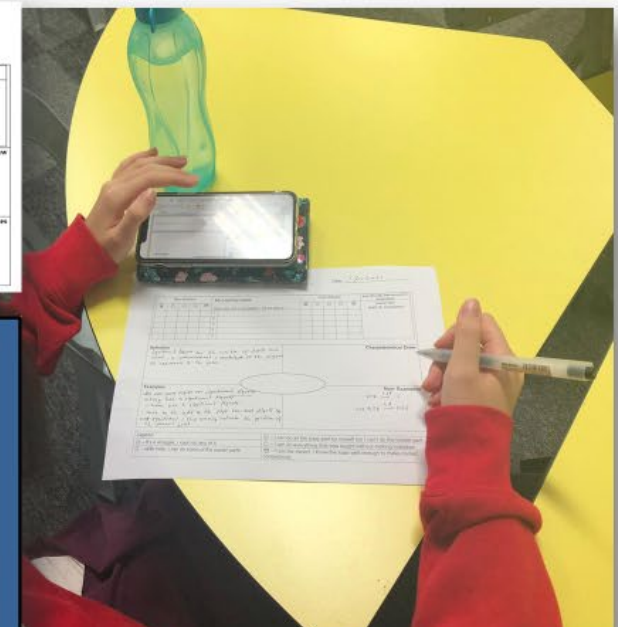
- Crunching noises as insects are being eaten
- The quiet scuffling of claws on bark while climbing the tree



UNITY SECONDARY SCHOOL

Student Handbook 2021

Leading Self, Serving Others; Actualising Self, Inspiring Others

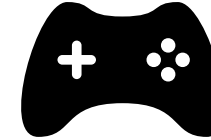


**Supporting Students in the Safe
and Effective Use of the Devices**

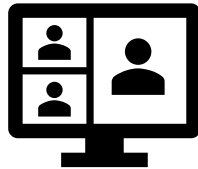
Cyber Wellness Concerns Identified by Local Studies/Surveys



**Harmful Online
Content**



**Gaming and
associated risks**



Cyberbullying



**Excessive social
media use**

** Refer to [Slide 68](#) for the references of the research papers cited in this slide.*

Supporting Students in the Safe and Effective Use of the Devices

To enable a safer digital environment for learning with the use of PLDs, schools have implemented the following measures:

- School rules on digital device use
- Classroom management and routines
- Cyber Wellness Education in CCE
- Partnering parents/guardians to support students in their use of technology for learning
- MOE Device Management Application (DMA) to support a safer digital environment for learning

School Rules on Digital Device Use

We have uploaded the **Acceptable Use Policy (AUP)** in the school's website for parents at: <https://www.unitysec.moe.edu.sg/ndlp-at-unity/Parents-Tool-Kit/Id/>

For 2026,

all electronic devices (excluding PLDs) must be stored in assigned Electronic Device Lockers (EDLs) during school hours. Students are required to store devices in their assigned EDL upon entering school and retrieve devices only after the school day ends (after the last scheduled lesson, CCA, or intervention session). During school hours, Unitians may only use their **PLD (Chromebook) as their learning device.**

Classroom Management and Routines

Key points:

- Students are responsible for their PLDs. In the event of loss or theft of the device, you must make a police report and report the matter to the school.
- In order to have a positive learning experience, students should ensure that their PLDs are fully charged before bringing it to school. Should there be a need to charge their PLDs in school, students should only do so at the school's designated charging stations, during recess and/or after-school hours.
- Students are reminded to keep their PLDs updated by installing the relevant patches and updates when being prompted by the system.
- All PLDs are installed with a Device Management Application (DMA) to support a safe and conducive learning environment. You should not attempt to bypass the DMA.

Cyber Wellness Education in CCE

Educating students on Cyber Wellness

Cyber Wellness lessons will feature significantly in the Character and Citizenship Education (CCE). The broad topics covered in Cyber Wellness are:

- Cyber Use
- Cyber Identity
- Cyber Relationships
- Cyber Citizenship
- Cyber Ethics

Cyber Wellness Education in CCE

Throughout their Secondary School education, students will learn about:

- Balanced use and self control
- Cyber bullying and Upstanding
- How to be a positive influence online
- How to handle online falsehoods
- How to manage social media (peer influence, emotions, echo chambers)
- Online relationship and Online safety (grooming, self disclosure)
- To respect intellectual property rights

Parents'/Guardians' Role

- Parents/guardians play a crucial role in guiding your child/ward to use devices responsibly and safely. We would like to partner parents/guardians so that students are well supported in their use of technology for learning.
- As parents/guardians, you can help in the following ways:
 - Model good digital habits for your child/ward e.g., parents/guardians not using devices during family meals.
 - Know your child/ward well and have conversations with your child/ward about safe and responsible use of technology.
 - Discuss and come up with ground rules for internet/device usage that both your child/ward and you can agree with.
 - Encourage your child/ward to use productivity tools on his/her PLD, to organise information and simplify tasks for efficiency.

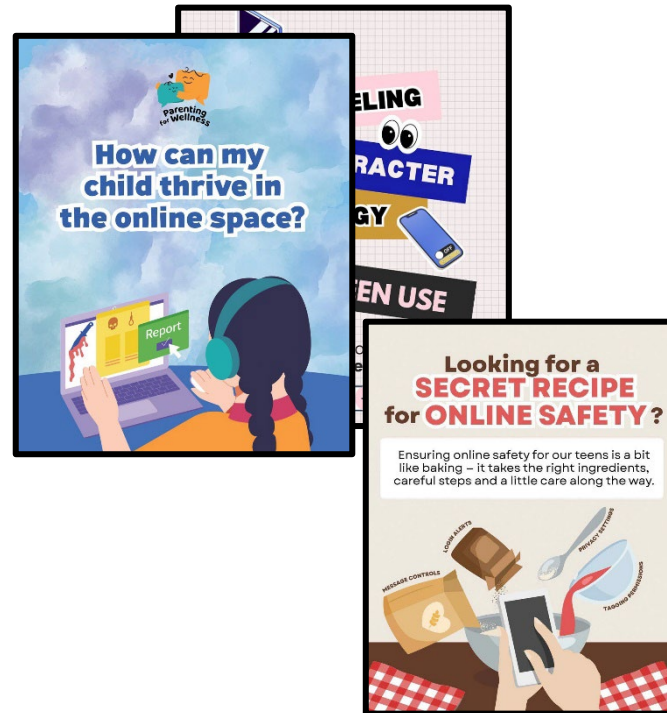
Supporting Resources

Here are some resources that you can refer to:

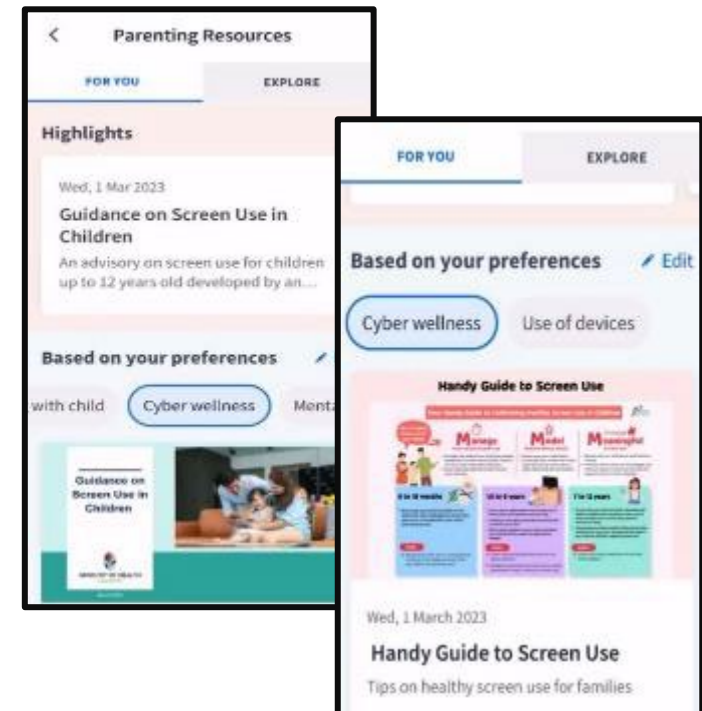
A. Parent Kit



B. Bite-sized tips and advice via Parentingwith.MOEsg Instagram page



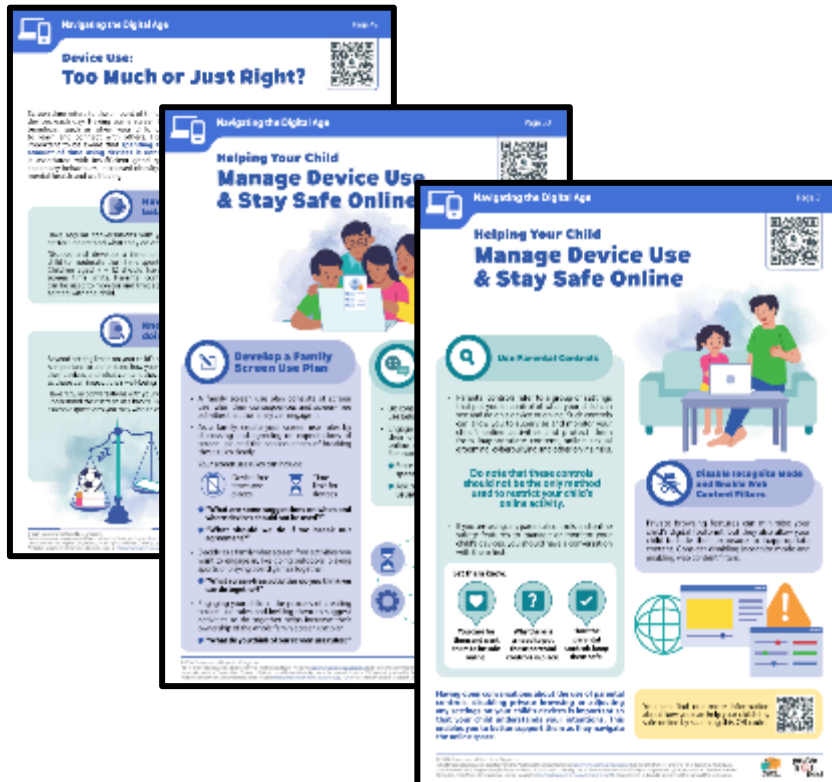
C. Resources from MOE and other agencies (available on resources repository in Parents Gateway)



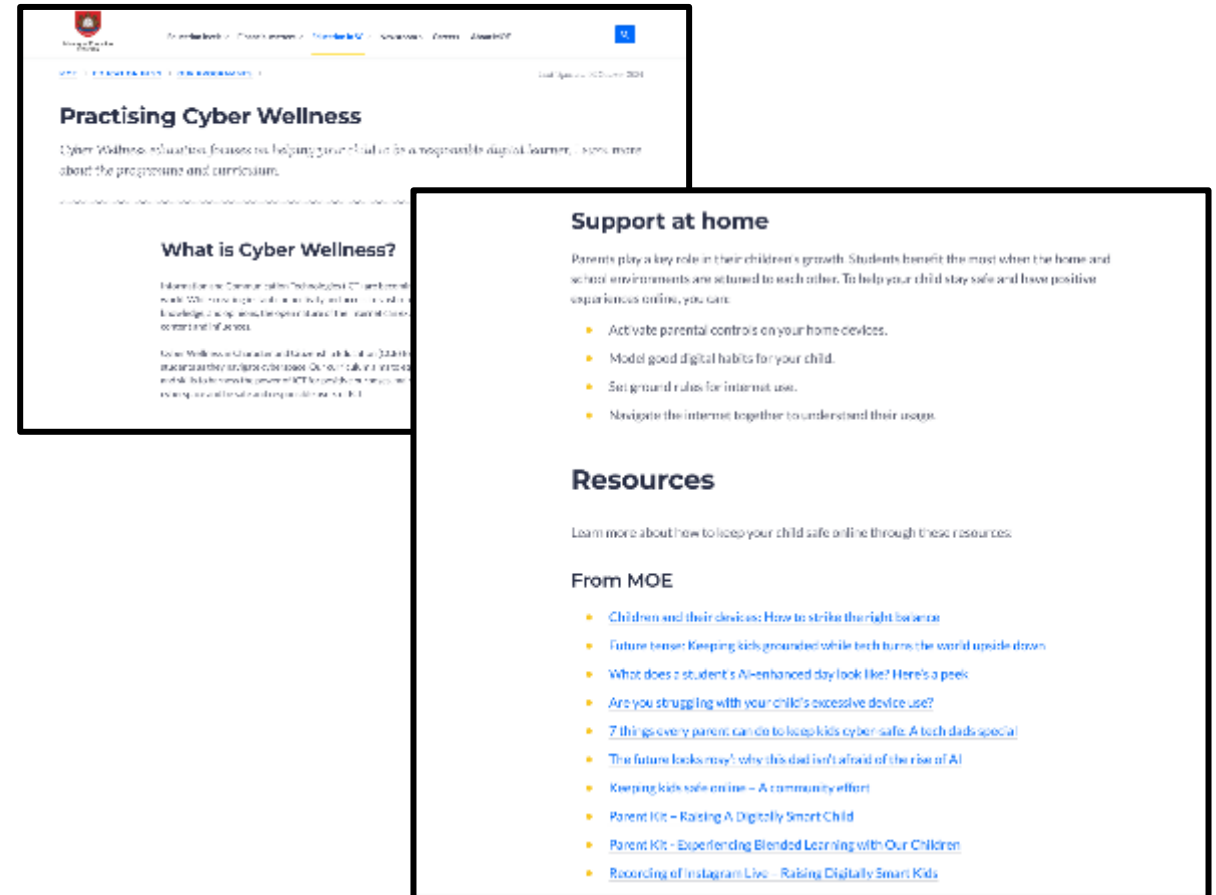
Supporting Resources

D. Parenting for Wellness Toolbox for Parents and Parenting for Wellness Website on Parent Hub

The Parenting for Wellness initiative provides bite-sized resources (practical tips and strategies) on building strong parent-child relationships, supporting your child's mental well-being and parenting in the digital age.



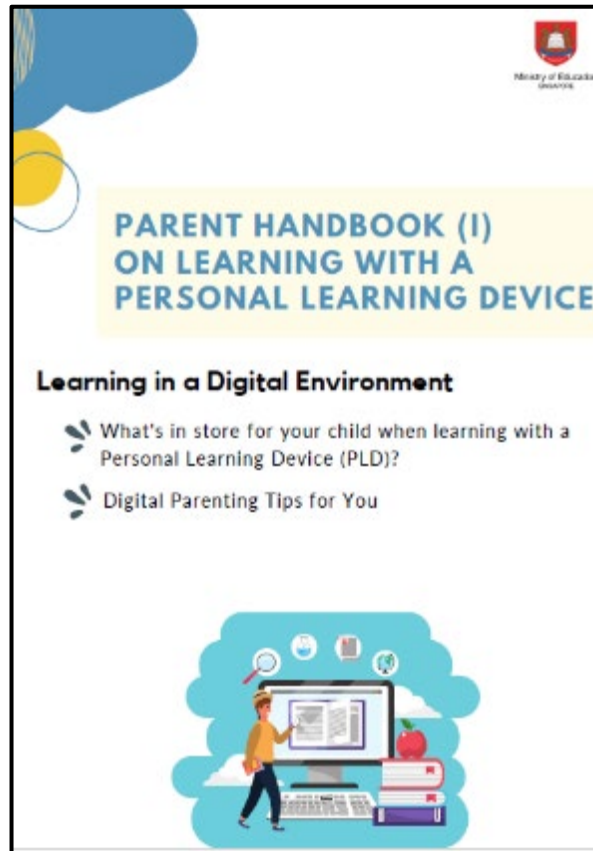
E. More resources are available via the MOE Cyber Wellness Webpage



Supporting Resources

F. Parent Handbooks (I) and (II) on Learning with a Personal Learning Device

These Handbooks provide tips on supporting your child in the use of PLDs for learning and are shared via the PG notification together with the letter to purchase PLDs.



Role of the MOE Device Management Application (DMA) in Providing a Safer Digital Environment for Learning

MOE DMA

- The MOE DMA solution for Chromebook, Lightspeed Systems®, is an app that will be installed on all students' PLDs to support their safe and responsible use of devices.
- The DMA will be funded by MOE.
- The installation of the MOE DMA applies to both devices purchased through the school and any student-owned devices that parents/guardians opt for the student to use instead of the school-prescribed PLD.
- The MOE DMA will be installed after the collection of the device. Students will be guided on the installation.
- The MOE DMA will be uninstalled from the device when students graduate or leave the school.

In-School DMA Settings (Default)

Schools will determine DMA settings for **in-school use**. As a default, these settings will continue to be in place after school as well:

- MOE and the school will set the level of web content filtering, including filtering objectionable content or content that may not be conducive to teaching and learning (e.g., online messaging, **social media**, pornography, gambling, or websites containing extremist content).¹
- School hours are defined to be from **<6:30 am to 6.00 pm>** and after school hours from **<6.00 pm to 10:30 pm>**. The device will shut down at **10:30 pm** by default.²
- The school will determine the applications and programs to be installed to support teaching and learning.

¹ YouTube is not blocked by default as teachers use YouTube for teaching and learning. However, YouTube videos that are categorised as harmful by YouTube Restricted and Lightspeed Smart Play are blocked.

² Schools have the flexibility to customise the following:

- start of school hours, provided they are **no earlier than 6:30am**;
- end of school hours / start of after-school hours (no restriction);
- End of after-school hours / start of device sleep hours, provided it is **no later than 10:30pm**.

After-School DMA Parent Options

1. After-School DMA Parent Options provide parents with the flexibility in managing their child's/ward's use of the PLD after school hours.
2. The following tables outline the different levels of restrictions, controls, and monitoring for each DMA option after school hours.

Default	Option A	Option B (Not Recommended)
Default Setting (Note: This will apply if no alternative options are chosen)	DMA settings can be modified by Parents/Guardians after school hours	DMA will be inactive after school hours¹
For parents/guardians who want their child's/ward's use of the PLD to be restricted only to teaching and learning, and prefer to leave it to the school to decide on DMA settings after school hours.	For parents/guardians who prefer to take charge of the level of restrictions for their child's/ward's use of the PLD after school hours regulated by the DMA.	For parents/guardians who do not want their child's/ward's use of the PLD after school hours to be regulated by the DMA at all.

¹ No data will be collected after school hours when the DMA is inactive.

- Having default school settings continue after school hours is the best option for parents/guardians who prefer not to, or do not feel ready to manage their child's/ward's device use on their own.
- Parents/guardians can request to change their choice of DMA settings, which is the existing practice.

After-School DMA Parent Options

	Default Setting (This will apply if no Alternative Options are chosen)	Alternative Setting: Option A (DMA settings can be modified)	Alternative Setting: Option B (DMA will be inactive only after school hours)
Protect students from objectionable content	<p>Web content filtering will include, and not limited to the following categories:</p> <ul style="list-style-type: none"> • Violent/extremist content • Sexual/pornographic content • Suicide/self-harm content • Cyberbullying content • Content endangering public health • Gambling-related content 	<p>Parents/Guardians will be able to include additional web content filtering by requesting school block any harmful website in addition to major social media websites (e.g., YouTube, Pinterest, X, Instagram, Facebook).</p> <p>However, parents/guardians cannot allow access to web content that is filtered out under the Default Setting.</p> <p>Parents can pause internet access after school hours.</p>	<p>No content filtering after school hours if a student logs in to the Chromebook via his/her personal Google Account.</p>

After-School DMA Parent Options

	Default Setting (This will apply if no Alternative Options are chosen)	Alternative Setting: Option A (DMA settings can be modified)	Alternative Setting: Option B (DMA will be inactive only after school hours)
Reduce distractions from learning through control of applications	Parents/Guardians and students will be unable to install additional Chrome extensions and/or applications.	<p>Parents/Guardians will be able to install additional Chrome extensions and/or applications by submitting a request to the school.</p> <p>As these applications will be accessible both during and after school hours, please ensure that the requested applications support your child's/ward's learning.</p>	<p>Parents/Guardians and/or students will be able to install additional Chrome extensions and/or applications after school hours via the Google Play Store, using the parent's/student's personal Google account.</p> <p>These applications will not be accessible during school hours as students will have to login using their student iCON account.</p>

After-School DMA Parent Options

	Default Setting (This will apply if no Alternative Options are chosen)	Alternative Setting: Option A (DMA settings can be modified)	Alternative Setting: Option B (DMA will be inactive only after school hours)
Limit screen time	The school will define the specific hours during which the PLD is allowed to access the internet.	Parents/Guardians can modify the amount of screen time for their child/ward by requesting the school set sleep hours (by selecting 1 prescribed option) on their child's/ward's PLD. ²	No limitation on duration of screen time after school hours. Sleep hours are not enforced. ³

² During school hours, the screen time limits set by the school will override parents/guardians' settings.

³ It is not recommended to install other parental controls (e.g., Google's Family Link) as this could result in conflicting settings between school and parent controls. It may result in unexpected issues where some controls such as screen time restrictions may not work as intended.

After-School DMA Parent Options

	Default Setting (This will apply if no Alternative Options are chosen)	Alternative Setting: Option A (DMA settings can be modified)	Alternative Setting: Option B (DMA will be inactive only after school hours)
Monitor students' cyber activities	Parents/Guardians will not be able to track their child's/ward's browser history.	Parents/Guardians can track their child's/ward's browser history after school hours via. the Lightspeed parents' portal. A Filter Portal Weekly Report can also be emailed to them.	Parents/Guardians will not be able to track their child's/ward's web browser history.
Provision of Parent Account	X	✓	X

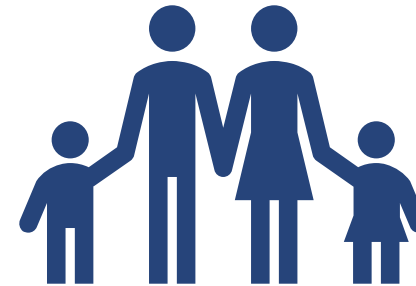
Support for Parents/Guardians

Parents/guardians may wish to consider the following questions to decide the After-School DMA Parent Option that best suits your child/ward.



A. Child's/ward's current device usage habits

- How much time does my child/ward spend on their device?
- How well is my child/ward able to regulate their device usage on their own?
- Does my child/ward get easily distracted while doing online learning?



B. Parents'/Guardians' involvement

- How confident and familiar am I with managing my child's/ward's cyber wellness?
- Are there existing routines and open conversations on the use of the Internet at home?
- Am I aware of how to prevent different types of cyber threats that my child/ward might face?

Data Collected by the MOE DMA

1. The MOE DMA does **NOT** collect any of the following data:
 - Login IDs and passwords entered into websites or into any applications
 - Actions performed (e.g., posts, online comments, items added to a shopping cart, etc.) when visiting websites and using apps
 - Documents and photos stored in the PLDs
 - PLD location
 - Webcam videos and microphone recordings
2. Parents may update their personal data (e.g., email addresses, names) by contacting the school, in accordance with the Personal Data and Protection Act (PDPA).

Data Security

- All user data collected through the MOE DMA will be stored in secure servers managed by appointed DMA Vendors with stringent access controls and audit trails implemented.
- Data such as device information, email address of students and parents, device information will be deleted when the student graduates or leaves school. Website URLs accessed by students will be deleted at the end of each term.
- The MOE DMA solutions used are cloud-based Software-as-a-Service (SaaS) solutions and are trusted solutions that have been operating for many years. They have also been subject to regular security reviews and assessments by independent reviewers.

Data Security

- The MOE DMA solutions have sufficient security robustness to ensure that the data collected is properly stored and protected. MOE will also subject the DMA Vendors to regular security system audits based on tender requirements.
- To prevent unauthorised access, DMA Administrators and DMA Vendors will be required to access their accounts using 2-factor authentication or the equivalent to ensure proper accountability for information access and other activities performed. There will be regular account reviews and audits for DMA Administrators' and DMA Vendors' accounts.

Device and Funding Information

Unity Secondary School's Personal Learning Device



Intel Celeron N250
processor, 8GB RAM, 64GB
Storage, 12.2" Touch Screen,
360° flip with dual cameras,
Stylus Pen

The school will be using the **Acer Chromebook Spin R857TN** for teaching and learning.

Total Cost with GST: \$673.60

Inclusive of 4 Year Carry In Warranty + Sealed Battery Warranty + Comprehensive Accidental Damage Protection (Insurance) and add-on Cable Lock & USB Type C Earpiece

Unity Secondary School's Personal Learning Device



Acer Chromebook Spin
R857TN

The school chose the device because of:

- **Durability** : Rugged and able to withstand knocks, drops and spills for daily use.
- **Teaching & Learning Affordances** : Touch screen with stylus allows students to take notes and drawings in SLS and other applications.
- **Fast boot-up** : Chrome OS takes less than 10 seconds to boot up.

Personal Learning Device Bundle

Device Bundle

What it includes

- Acer Chromebook Spin R857TN
- Cable Lock
- *USB Type C Earpiece*
- Insurance and Warranty
- **4** year warranty and **4** year insurance
- 2 repairs or 1 replacement claim

Insurance Coverage

The package includes **4 year insurance** which includes:

Insurance Coverage	Claimable
<ul style="list-style-type: none">• Fire• Lightning• Power Surges• Accidental e.g water spillage, drop etc• Theft due to forcible entry• Robbery <p>* Accidental loss will not be covered by insurance.</p>	2 repairs or 1 replacement (4 year insurance)

Technical Support for Student's Devices

Technical support will be provided to students through:

- **Service-desk set up in school** during breaks and after school on a weekly basis
 - ✓ Troubleshooting of device issues
 - ✓ Solve connectivity issues
 - ✓ Collection of devices to be sent for repairs
- Acer Service Centre @ International Service Centre(Jurong)
Repair of devices (hardware issues)

***Students are to bring their PLD to ICT Centre instead for repair.**

Funding Support for Singapore Citizen (SC) Students

- **The cost of the device bundle can be paid using your child's/ward's Edusave account**, after setting aside provision for payment of miscellaneous fees.
- To ensure the affordability of devices, MOE has provided Edusave top-ups from 2020 to 2023 to all eligible Singaporean students in primary and secondary schools. In 2025, MOE has provided a **\$500 Edusave top-up for students aged 13-16 years old**.
- These top ups are on top of the annual \$290 credited into the Edusave account for Secondary School students and \$230 for Primary School students.

Funding Support for Singapore Citizen (SC) Students

- For SC students who are on MOE Financial Assistance Scheme or whose family's monthly income meets the following criteria:

Gross Household Income (GHI) \leq \$4,000, or

Per Capita Income (PCI) \leq \$1,000

MOE will subsidise 50% of device bundle cost or \$350, whichever is lower.

- The remaining amount will be payable from the students' Edusave account. If there is insufficient balance in the students' Edusave account for the remaining amount, MOE will provide additional subsidy so that the cash out-of-pocket (OOP) is \$0.

Funding Support for Singapore Citizen (SC) Students

- For SC students whose family's monthly income is:

$\$4,000 < \text{Gross Household Income (GHI)} \leq \$5,500$, or

$\$1,000 < \text{Per Capita Income (PCI)} \leq \$1,375$

MOE will subsidise 30% of device bundle cost or \$200, whichever is lower.

- The remaining amount will be payable from the students' Edusave account. If there is insufficient balance in the students' Edusave account for the remaining amount, MOE will provide additional subsidy so that the cash out-of-pocket (OOP) is not more than \$50.

Funding Support for Singapore Citizen (SC) Students

- Subsidies will not be provided for SC students whose family's monthly:
 - Gross Household Income (GHI) is above \$5,500 or
 - Per Capita Income (PCI)[#] is above \$1,375.
- Parents/Guardians can use their child's/ward's Edusave or cash to defray the device bundle cost.

[#]PCI is Gross Household Income divided by the number of household members.

What's Next?

Parental Consent for Procurement

1. Parents/Guardians can access the **Parental Consent for the Purchase of Personal Learning Device (PLD)** via a Parents Gateway (PG) notification* that will be sent to you on **9 Jan 2026**
2. Parents/Guardians who want to use Edusave funds for the PLD (for Singapore Citizens students only), please access: <https://go.gov.sg/edusaveformsgso> by **16 Jan 2026** to set up a **PDLP Standing Order** as this was not applicable during primary school.

* Parents/Guardians without access to PG can request for the hardcopy letter via your child's/ward's form teacher.

For Singapore Citizens (SC) Students

Time Frame	Activity
16 January 2026	<ol style="list-style-type: none">1. Submit:<ol style="list-style-type: none">a. consent to PLD purchase via the PG notification which includes the following:<ul style="list-style-type: none">• Intent to Purchase Personal Learning Device (PLD);b. the Standing Order (SO) for the use of Edusave Account via https://go.gov.sg/edusaveformsgso (for Singapore Citizen students only) to set up a PDLP SOc. Parents without access to PG can submit their consent via hardcopy.
6 March 2026	Collection of devices by students

For Permanent Residents / International Students

Time Frame	Activity
16 January 2026	1. Submit consent to PLD purchase which includes the following: <ul style="list-style-type: none">• Intent to Purchase Personal Learning Device (PLD);
23 January 2026	Parent/Guardian to make payment via Giro/PayNow
6 March 2026	Collection of devices by students

Important Contacts / Helplines

To access / find out more about...	Contact / Helpline
This deck of slides	https://www.unitysec.moe.edu.sg/ndlp-at-unity/Parents-Tool-Kit/ptk/
Edusave balance	6260 0777
Financial assistance	67671070
Email queries	admin_unity_SS@moe.edu.sg>

Thank you



OFFICIAL(OPEN)\NON-SENSITIVE



Ministry of Education

SINGAPORE